

Hylas 2 - freedomsat 98/ 74cm Dish Setup Guide



Satellite Internet
Solutions
<http://www.wafa.ae>

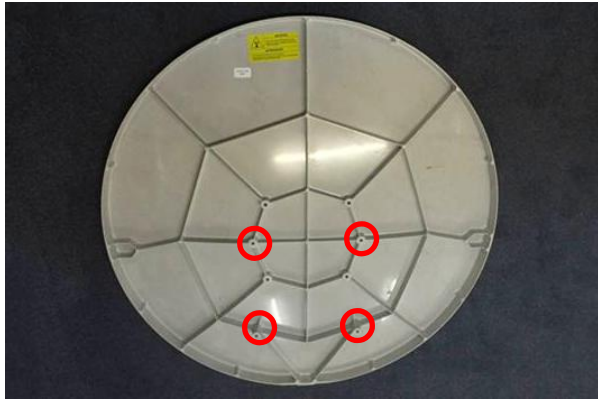
The below packages are representative of what you will be receiving.

1 x 98 / 74 cm dish (with arms)

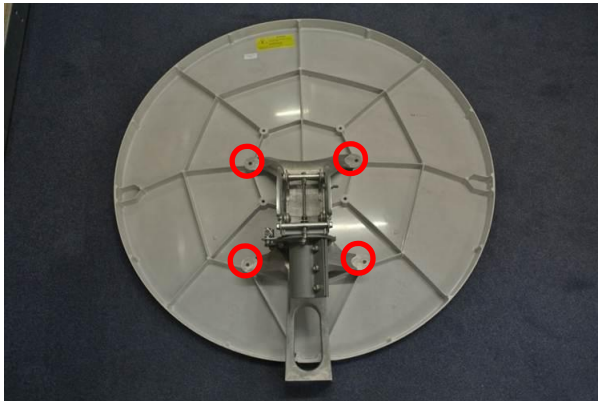
1 x Dish mount

1 x TRIA (transmit and receive)

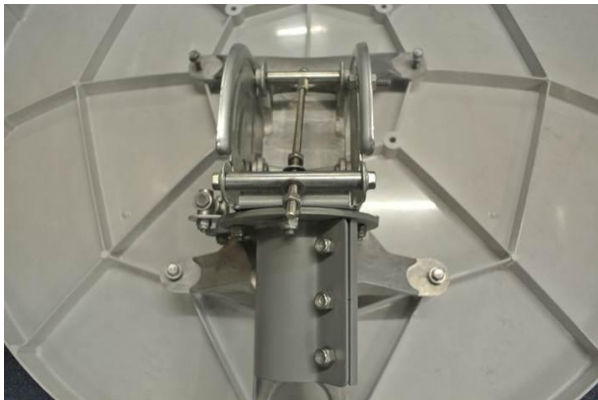




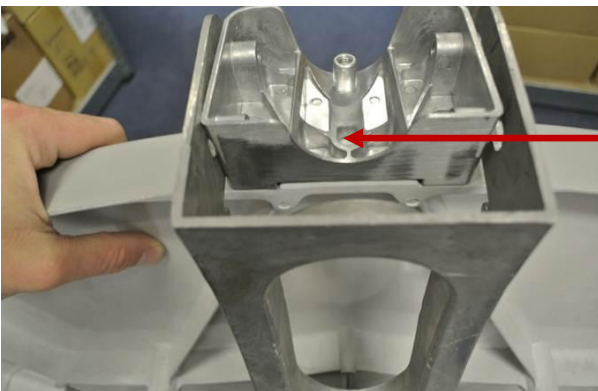
- Place the dish face down.
- Identify the screw holes. (Circled in red on the photograph)



- Remove the mount from the box
- Align the screws with Dish



Once screwed in it should look like this...



- Place main arm mount on top of dish.
- Align screws with holes going through both main mount and main arm mount
- Screw until tight



Identify main arm
Place screws through arm, main
arm mount and dish



Underside view of screw through
arm, main arm and dish.



Smaller arms attach to far end
of the main arm, both using the
same bolt.
Both smaller arms attach to
outside rim of the dish



Screws attach on the
outside and inside of
dish



The connecting smaller arms to the dish should look like this

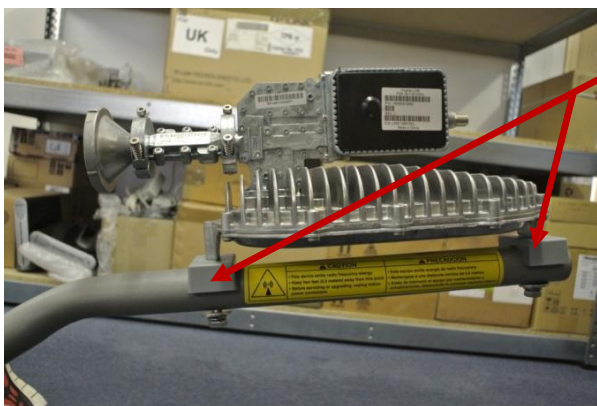
The dish face is placed upside down to help assembler to attach arms



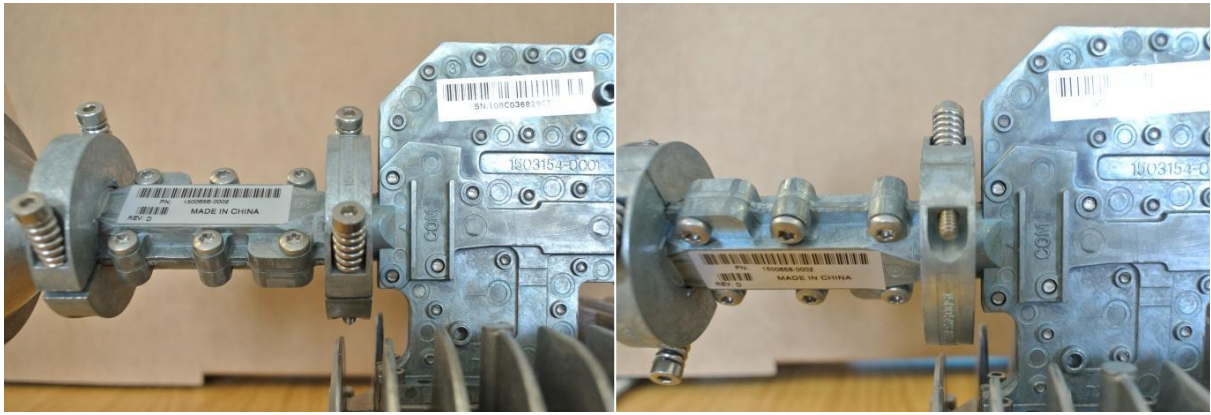
This closer view shows the smaller arms connected to the main arm



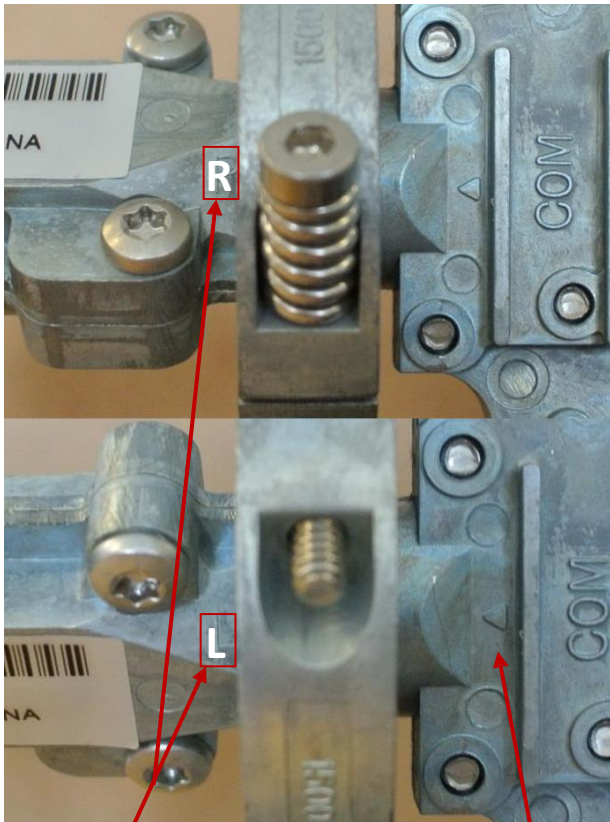
Identify the end of the main arm
Next unbox the head/TRIA



- Place the plastic supports on top of the main arm
- Place TRIA on top on the top of the plastic supports
- Tighten screws



Changing the polarisation – By default the kit sent to you will be set for right hand polarisation (left photograph)



In the upper photo the TRIA is set to Right Hand polarisation (RHCP)

In the lower, this is set to Left Hand Polarisation (LHCP)

These two positions are changed by rotating the front part attached to the feedhorn and aligning the L (for left hand) or R (for Right hand) polarisation with the arrow on the right side of these photos.



The completed article...

Support

Online Ticket System

<http://helpdesk.wafa.ae>

WAFA Support

support@wafa.ae

Tel +971-2-6334216

www.wafa.ae/en/vsat/support.aspx

Current Throttle Status

WAFA Downloads

Product Documentation

Setup Video
